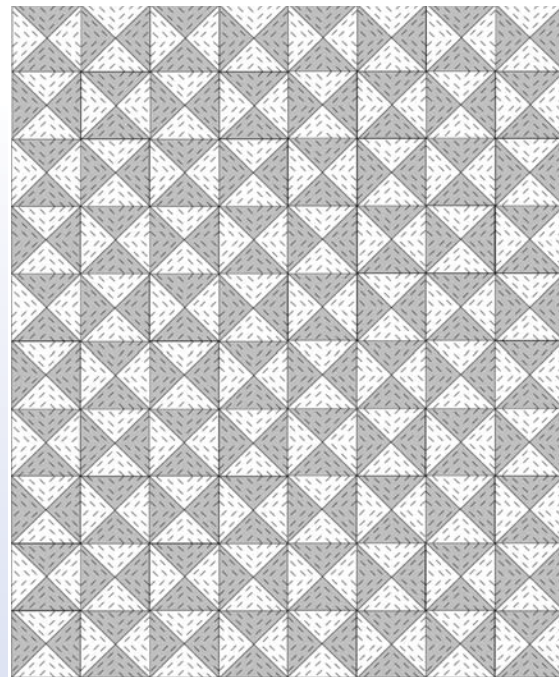


BRING-ALONG QUILT *it's REVERSIBLE!*



Finished size
40" X 50"
Blocks set
8 X 10



Supplies:

Prewash Fabrics, Do Not Presoak Batting

Backing included in these measurements:

4 1/2" Light Squares 23/4 yards

4 1/2" Color Squares 23/4 yards total

Batting - Traditional® Queen size 90" X 108"

(You will have plenty left over to make your quilt larger or make another!)

Regular Sewing Thread

80/12 Sewing Needle

1/2" wide masking tape

Hand Quilting Thread

Hemostat or favorite turning tool

Cutting Directions

Four Patch Blocks:

Lights:

-Cut one hundred and sixty 4 1/2" squares

Colors:

-Cut one hundred and sixty 4 1/2" squares

Please read through piecing directions and make one sample square prior to cutting into your batting.

Choose a pretty basket to hold your squares while your quilt is in progress.

Piecing Directions:

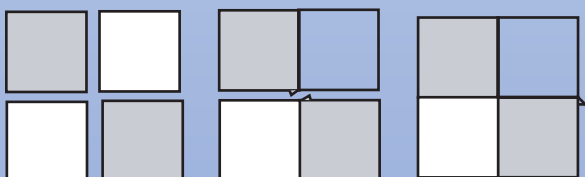
Use 1/4" seam allowances for piecing.

Four Patch Blocks:

1) Join two Light squares with two Color squares to form a four patch as shown: (A)

Press seam allowances toward the Color fabric. (B)

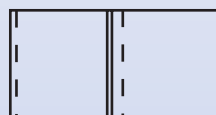
Press the center seam in one direction. (C)



A

B

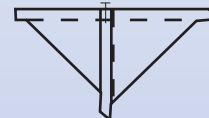
C



Fold in half and stitch along both sides.
Backstitch to secure seams.

3) Open and bring the opposite sides together as shown:

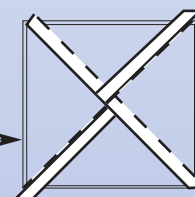
Butt the center seams and pin. Begin at one corner and stitch to slightly past the center seam and backstitch. Lift presser foot to release the tension on the thread and slide the block forward slightly (leave about 2 1/2" opening) Stitch to opposite end and backstitch to secure. Trim the corners.



4) Press the square flat and measure the width.

Add 1/8" to this measurement and cut eighty **Batting** squares this size.

Batting →

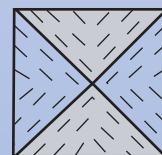


5) Match one batting square against the closed side of the square and baste a stitch in each corner to hold the batting in place.

6) Turn right side out and whip stitch opening closed. Carefully pick out corners neatly with your needle.

7) Using 1/2" wide masking tape, quilt as shown:

Quilt parallel to the edges of the triangles, traveling under from row to row.



8) Lay your squares on a flat surface and check for color placement. You can use safety pins to hold the rows together until you sew them by hand. To join the squares together; match a color side to a light side and whip stitch tightly with a cotton thread. Take a small bite of both the fabric and the batting. A small ridge will begin to form on one side but, with use, will flatten out so that it is difficult to tell which is the right side of the quilt.

 **Fairfield**

www.poly-fil.com